



SIMON MØKSTER SHIPPING



STRIL LUNA

**Supply / Rescue /Service Vessel / Oil Rec NOFO 2009/
ERN 99.99.99.99**

OWNERS

Simon Møkster Rederi AS
c/o Simon Møkster Shipping AS
PO Box 108
N-4001 Stavanger
NORWAY

Phone: +47 51839000
Fax: +47 51839090
E-mail: post@mokster.no

MANAGING COMPANY (DOC HOLDER)

Simon Møkster Shipping AS (same address as above)
manages the vessel.

IDENTIFICATION

Call Sign: LEHE
IMO No: 9666546
DnV no: 32819
MMSI no: 257597000

SERVICES AVAILABLE

The vessel is equipped and fitted for the following services:

**Platform Supply
Stand-by / Rescue duties
Oil Recovery operations
Good station keeping (ERN 99.99.99.99)
Winterized**



MAIN DETAILS

Type:

UT 776 WP
Supply / Rescue /Service Vessel / Oil Rec NOFO 2009/ RR
Unified Bridge

Class DnV

1A1 Offshore service vessel(Supply) Standby vessel (150)
Clean(Design) COMF(C-3, V-2) DK(+) DYNPOS(AUTR) E0
HL(2.8) Ice(1C) LFL(*) NAUT(OSV(A)) OILREC SF
Winterized(Basic)

Certificates

World Wide, SOLAS 74/78
Load line conv. 1969,
NMD Rescue class for 150 survivors
NOFO-2009 Oil Recovery

Yard and Registry

Builders Astilleros Gondan S.A.
Vessel built 2014
Port of registry Hammerfest
Flag Norwegian

MAIN DIMENSIONS

L.o.a.	92,80 m
L.p.p.	82,60 m
Breadth	20,00 m
Deadwight	5000t
Draught, design/Scantl.	6,00 / 6,80 m

DECK SPACE / STRENGTH

Deck areal	1030 m ²
Deck Cargo	2700 tons
Deck strength	10 t/m ²

TANK CAPACITIES

Ballast water	1850 m3
Drill water	1850 m3
Freshwater	1000 m3
Dry bulk cargo tanks	350 m3
Base oil	180 m3
Fuel oil incl Base oil	1060 m3
Liquid Mud (6 tanks)	900 m3
Liquid Brine (4 tanks)	600 m3
Methanol/Special Prod (4 tanks)	340 m3
Recovered oil	1500 m3

CRANES

Two deck Cranes 10 T @ 8-14 m. (approved by NMD for rescue basket operations)

DYNAMIC POSITION SYSTEM DP-2

Rolls-Royce Icon DP2
DnV class DYNPOS – AUTR
2 DGPS
RADius
Fanbeam
ERN Number: 99.99.99.99

NAVIGATION EQUIPMENT

1 x Electronic chart system; Telco Tecdis -2136
1 x Radar Furuno FAR-2137 S-band (10 cm)
1 x Radar Furuno FAR-2117 X-band (3 cm)

1 x D-GPS Furuno GP- 150
1 x GPS Furuno GP-150
3 x GYRO type Anschutz 22
1 x AUTOPILOT Type Anschutz Nautopilot 5000
1 x ECHO-SOUNDER Type Furuno FE 700
1 x Voyage data recorder type Furuno VR-3016
1 x Automatic identification system type FA-150

COMMUNICATION SYSTEMS

The Radio installation is acc. to GMDSS-A3(WW)
1 x Taio TD-L1550A VHF direction finder.
1 x Furuno NX700, NAVTEX receiver.
1 x Furuno FS-2575 C MF/HF SSB w/DSC.
2 x Furuno FM 8900S VHF with DSC
4 x Furuno HS 4721 VHF SIMPLEX
2 x Motorola DP 4801 EX portable VHF
2 x Portable ICOM Aeronautical VHF ICOM AIR A6E
1 x Tron 40S MkII, automatic release EPIRB
1 x Tron 60S/GPS, manual EPIRB
2 x Jotron AIS SART
6 x Fixed Motorola DM 4600 UHF EX
8 x Portable Motorola DP 4801 UHF EX
2 x GSM Cell phone.
2 x GSM Cell phone for high speed data
2 x Inmarsat C –Mes Furuno felcom 18
1 x Inmarsat –F Fleet Broadband Felcom 500

DECK MACHINERY

One double windlass/mooring winch
Two 15 tonnes tugger winches
Two 10 tonnes capstans

SPEED

Service speed: 13 knots - approx. 14m³ @ 3 gen. sets
Eco Speed: 10 knots - approx. 7,5 m³ @ 1 gen. set
Full Speed: 15 knots – approx. 20 m³ @ 4 gen. sets
DP operation: approx. 5m³
Stand by: approx. 3m³ (outside 500m zone)

ACCOMMODATION

Total 25 –Persons
4 x Single Cabins–Captain class
4 x Single Cabins–Officer class
7 x Single Cabins–Crew class
4 x Double Cabins–Crew class
1 x Singe Cabin
1 x hospital

RESCUE AND LIFE SAVING EQUIPMENT

The vessel is arranged and equipped for 150 survivors according to NMD-rules The following Rescue/Lifesaving equip. is on board:

1 x Mob. Boat type Mare GTC700 – Dual redundancy
1 x Dacon Rescue Scoop
3 x Search lights, remote control from bridge
Hospital with treatment bench, stretchers, medicine and poison lockers, intercom and direct ship to hore communication.
Medical equipment/medicines in acc. to NMD.

ENGINES AND PROPULSION

Main Generators:

4 x Bergen Diesel C25:33L6CD 1843 kW 690V 60Hz, 2506 BHP.

Generator:

1 x Harbour generator 600 kW 690V 60 Hz, 805 BHP

Azimuth thrusters aft:

2 x Rolls-Royce Marine's CP Compass Thruster Systems, Azipull120 2500 kW, 3353 BHP

Azimuth thrusters forward:

1 x TCNS 73/M-180 FP, 880 kW, swing up, 1080 BHP

Tunnell thrusters:

2 x TT 2200 DPN FP SuperSilent, 883 kW, forward

OPERATING COMPANY

Simon Møkster Shipping AS
PO Box 108
N-4001 Stavanger
NORWAY
Phone: +47 51839000
E-mail: post@mokster.no
URL: www.mokster.no

QSHE – CERTIFICATIONS

ISM
ISPS
ISO-9001:2008
ISO-14001:2004

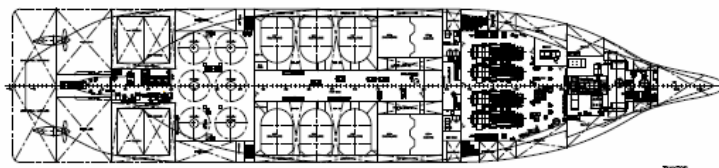
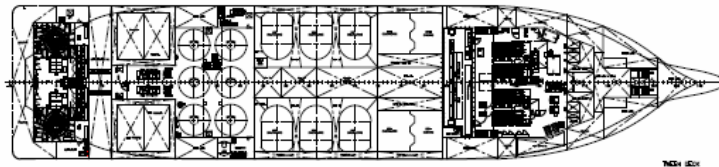
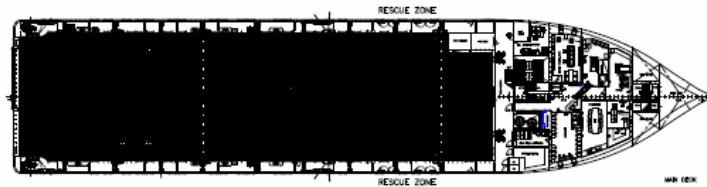
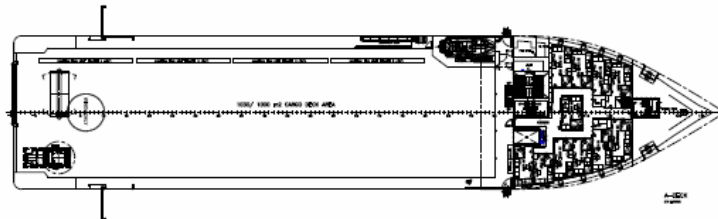
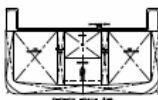
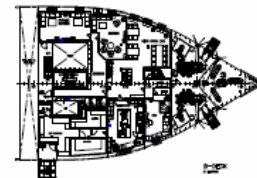
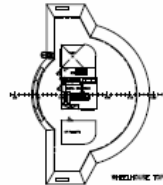
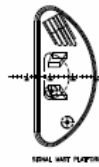
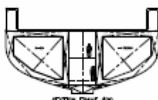
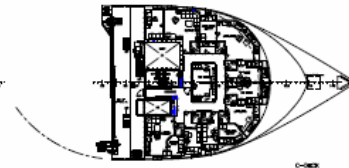
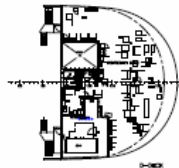
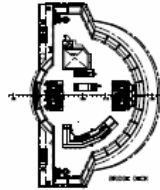
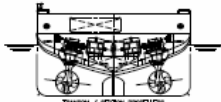
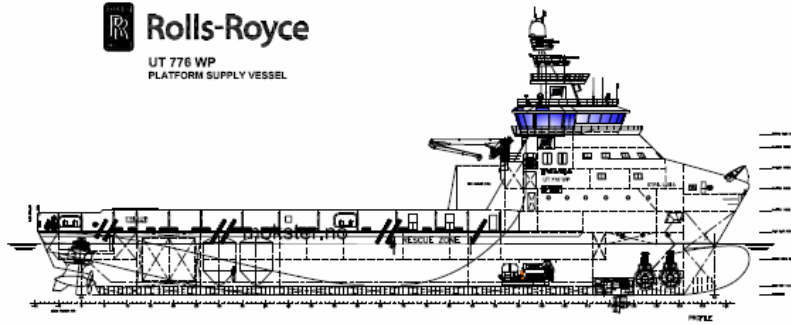
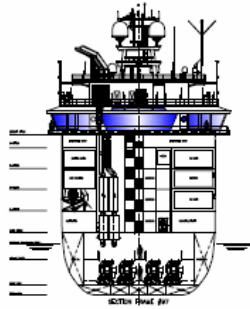
QA QUALIFICATIONS

IMCA Member
FPAL Registered
Achilles Registered
Sellihca Registered
OVID Registered





Rolls-Royce
 UT 776 WP
 PLATFORM SUPPLY VESSEL



GENERAL DIMENSIONS

L.O.A.	83.2 m
MAX. BEAM	18.0 m
MAX. DRAUGHT	8.0 m
MAX. DECK AREA	1,500 m ²
MAX. CARGO CAPACITY	2,500 m ³
MAX. PASSENGER CAPACITY	25 PERSONS

NO.	DESCRIPTION	DATE	BY
1	DESIGN	2016-10-19	STRIL LUNA
2	REVISION		
3	REVISION		
4	REVISION		
5	REVISION		
6	REVISION		
7	REVISION		
8	REVISION		
9	REVISION		
10	REVISION		
11	REVISION		
12	REVISION		
13	REVISION		
14	REVISION		
15	REVISION		
16	REVISION		
17	REVISION		
18	REVISION		
19	REVISION		
20	REVISION		
21	REVISION		
22	REVISION		
23	REVISION		
24	REVISION		
25	REVISION		
26	REVISION		
27	REVISION		
28	REVISION		
29	REVISION		
30	REVISION		